

Building Resiliency from the Ground Up

Anthony Giancatarino, *Program Manager, CSI*

Colette Pinchon-Battle, *Director and Attorney, GCCLP*

Diana Copeland, *Co-Director, EMEAC*

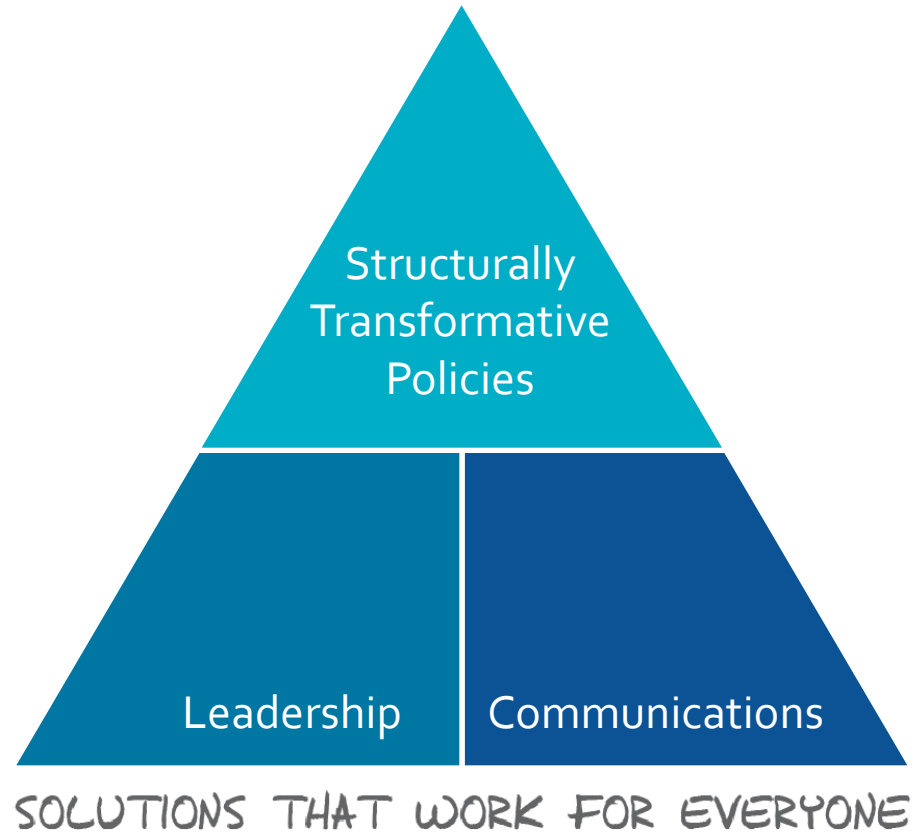
Vivian Huang, *Campaign and Organizing Director, APEN*

February 13 2014



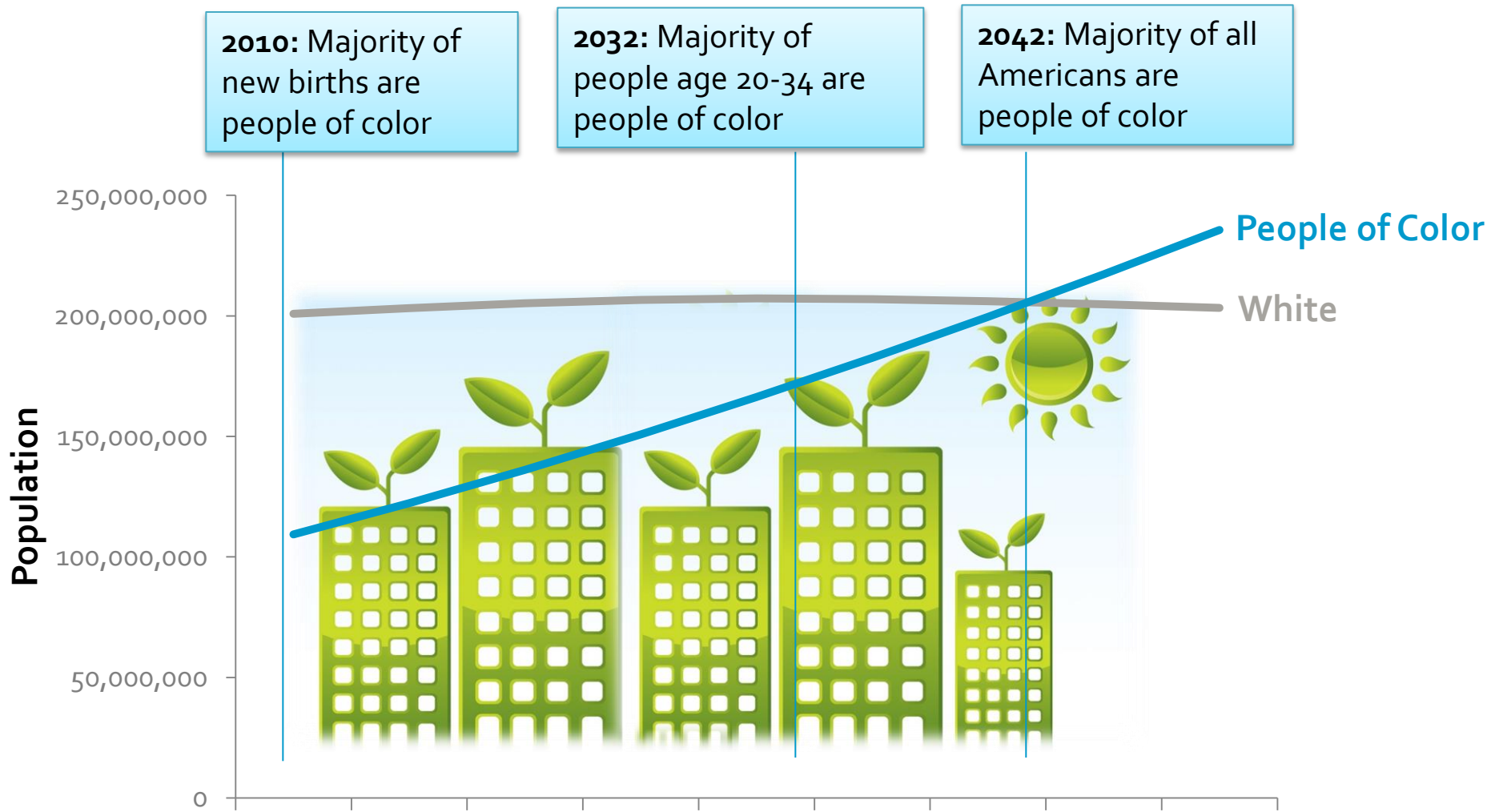
The Center for Social Inclusion

- Ideas
- Leadership
- Communications



CENTER FOR SOCIAL INCLUSION

Demographic Shifts Mean a New Majority



What we are facing...



CENTER FOR SOCIAL INCLUSION

Who is impacted & who has opportunity?



CENTER FOR SOCIAL INCLUSION

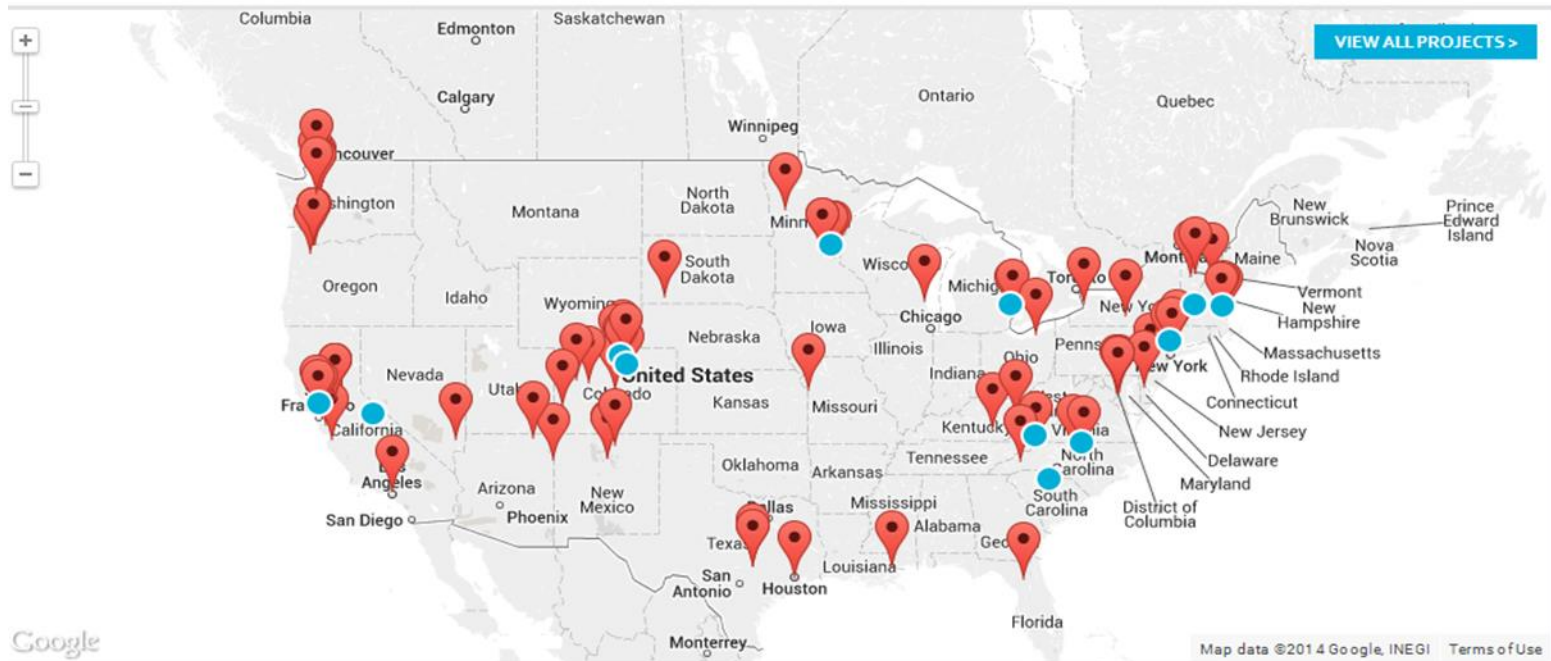
Resiliency: Bouncing Forward, not "Back"

Csi CENTER FOR SOCIAL INCLUSION

Keyword Search >

Energy Democracy for All

PARTICIPATE - INNOVATE - TRANSFORM



WHO

--Select--

LEARN MORE >

SIZE

--Select--

LEARN MORE >

HOW

--Select--

LEARN MORE >

HIGHLIGHTING A MOVEMENT

FEATURED PROJECTS

VIEW ALL PROJECTS >



CENTER FOR SOCIAL INCLUSION

Gulf Coast Center for Law & Policy

Non-profit, public-interest law firm and justice center serving communities on the frontline of Climate Change in coastal LA, MS and AL.

Mission:

Serve, train and advocate for structural shifts that promote climate justice and equity in law, society and community.

Theory of Change:

- (Stabilize) Legal Services
- (Build) Community Training & Facilitation
- (Engage) Human Rights Advocacy



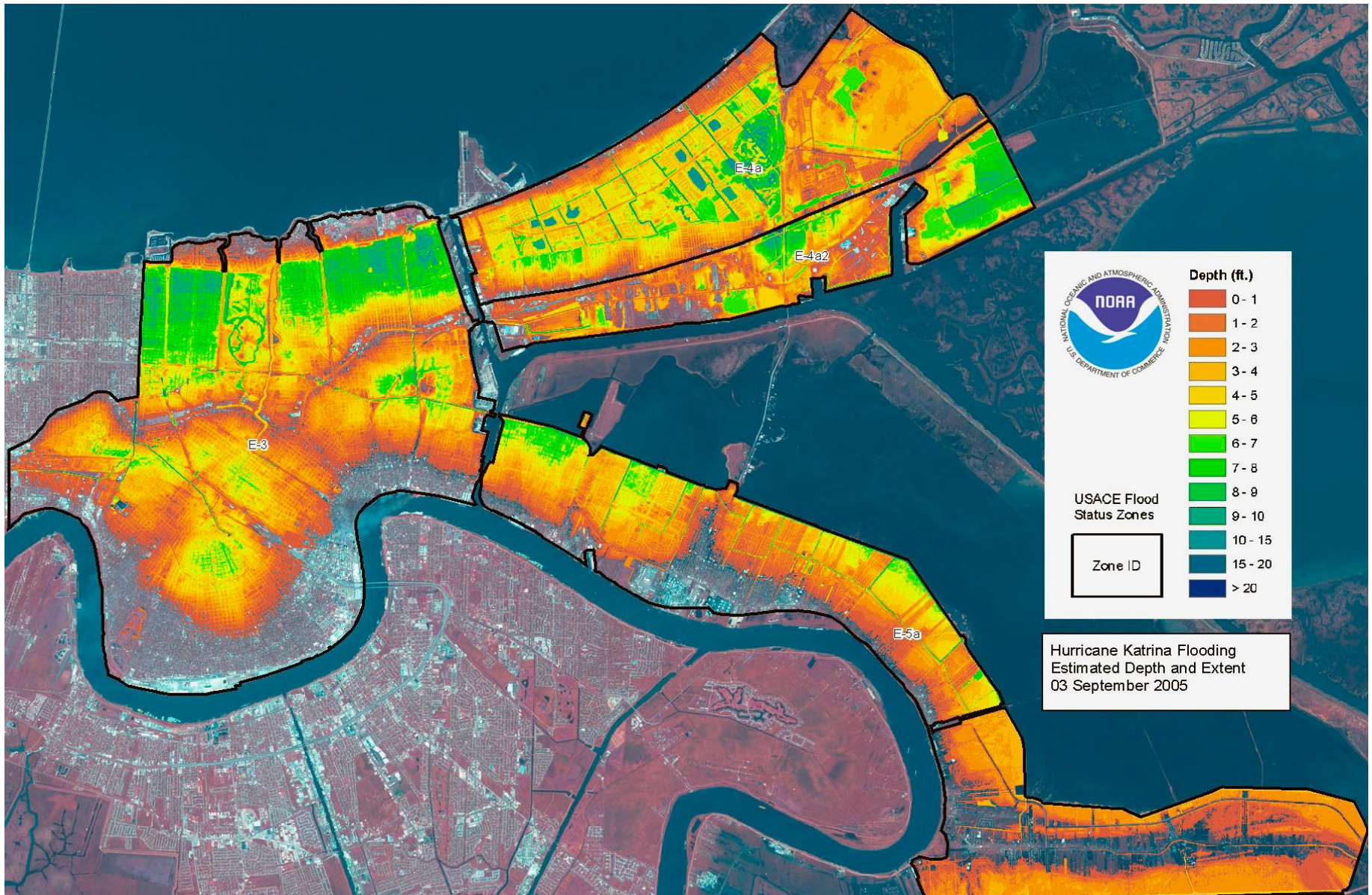
Aftermath of Katrina 2005



AP



New Orleans Katrina Flood Map



People's Movement Assembly Process



The Gulf Coast is: Sending Out an SOS



Contact Us

Gulf Coast Center for Law & Policy

620 Oak Harbor Blvd., Ste. 203

Slidell, Louisiana 70458

985.643.6186 (phone)

info@gcclp.org (e-mail)



Gulf Coast Center Law and Policy



GCCLPLA



Eastern Michigan Environmental Action Center

Asian Pacific Environmental Network



[Film Clip](#)



SOLUTIONS THAT WORK FOR EVERYONE

Visit us at: <http://centerforsocialinclusion.org/>

On Facebook and Twitter:

<http://www.facebook.com/centerforsocialinclusion>

<http://www.twitter.com/theCSI>

Contact: Anthony Giancatarino

agiancatarino@thecsi.org

212-248-2785 x1451



CENTER FOR SOCIAL INCLUSION